



**THE RITZ-CARLTON
RESIDENCES**

FORT LAUDERDALE BEACH

A DISTINGUISHED
NEW CHAPTER
on Fort Lauderdale Beach



VISION ⁰⁵

DESIGN ⁰⁸

THE RESIDENCES ¹³

EXEMPLARY AMENITIES ²³

LEGENDARY SERVICE ³⁰

LOCATION ³⁴

TEAM ⁴¹



VISION

5

THE RITZ-CARLTON RESIDENCES,
FORT LAUDERDALE BEACH



LEGENDARY ELEGANCE

Set along a stunning expanse of Fort Lauderdale's Intracoastal Waterway, this limited collection of 83 waterfront residences—with extraordinary views of the Atlantic Ocean—brings the flawless service, modern sophistication, and amenities to South Florida's most stunning shoreline.

THE VISION

THE RITZ-CARLTON RESIDENCES,
FORT LAUDERDALE BEACH





DESIGN

“We shaped spaces that reflect the vibrant coastal beauty of Fort Lauderdale Beach. Our approach to The Ritz-Carlton Residences, Fort Lauderdale Beach refine and distill the indoor-outdoor lifestyle into a sophisticated sanctuary of nature and culture. It is an iconic coastal destination, the façades of the two towers enhanced and enriched by sun and shadow, while evening reflects brilliant facets of light off the waterfront.”

Peter Stromberg

ARCHITECT, PARTNER, AND PRESIDENT OF GARCIA STROMBERG

DESIGN

THE RITZ-CARLTON RESIDENCES,
FORT LAUDERDALE BEACH



GARCIA STROMBERG



Private Residences, West Palm Beach



The Boca Raton, Boca Raton



Glass House, Boca Raton



Pier Sixty-Six Residences, Fort Lauderdale



Azul Condominium, Fort Lauderdale



One Thousand Ocean, Boca Raton

DESIGN

THE RITZ-CARLTON RESIDENCES,
FORT LAUDERDALE BEACH

MODERN CLARITY

Two towers, divided by a sparkling lap pool,
capture abundant sunlight and breezy open air.

An aerial view of a waterfront city at sunset. The sky is filled with soft, colorful clouds in shades of orange, pink, and blue. In the foreground, a modern high-rise building with a white facade and large glass windows is visible. The building has several balconies with glass railings, and some balconies have plants. The building is situated on a waterfront, with a river or canal flowing through the city. In the background, there are other buildings and a dense area of trees. The overall scene is peaceful and scenic.

REFINED SIMPLICITY

Immersive natural beauty,
a haven of tranquility on the waterfront.



THE RESIDENCES

BEHIND THE DESIGN

Dan Fink Studio creates intimate, sanctuary-like residences where classic and modern elements blend effortlessly.

Meticulous craftsmanship, natural materials, and thoughtful details come together in spaces that nurture connection and energy. Each residence, whether a two-bedroom or a penthouse, fosters life well-lived in a vibrant, tasteful, and timeless seaside setting.

THE RESIDENCES

THE RITZ-CARLTON RESIDENCES,
FORT LAUDERDALE BEACH



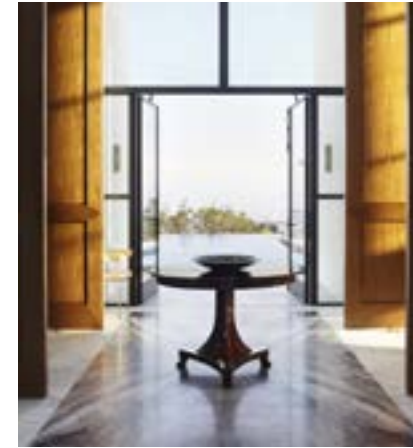
DAN FINK STUDIO



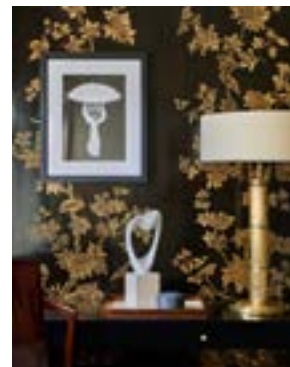
Miramar Club, Montecito, California



Fifth Avenue, New York



Hollywood Hills, California



The Carlyle, New York



Westport, Connecticut



Park Avenue, New York

THE RESIDENCES

THE RITZ-CARLTON RESIDENCES,
FORT LAUDERDALE BEACH

“Our inspiration for the design of The Residences was born from a combination of coastal beauty and refined modernism, with interiors curated to reflect the natural environment of Fort Lauderdale Beach—delicate textures, organic forms, and soothing palettes that exude iconic elegance.”

Dan Fink

INTERIOR DESIGNER AND FOUNDER, DAN FINK STUDIO

THE RESIDENCES

—
THE RITZ-CARLTON RESIDENCES,
FORT LAUDERDALE BEACH



White oak, warm beige stone, and soft oyster tones create a luminous palette, perfectly in tune with Fort Lauderdale's gentle golden light.

Curated seaside details enrich the shared amenity spaces.



Fluted golds, glass, and bronze pair with light organic materials, striking an artful contrast.



A palette of warm ocean blues and sandy tones lends a restorative, relaxed feel to every residence.



Chef-grade kitchen and spacious balcony—crafted for effortless entertaining and elevated outdoor dining.



ARTIST'S CONCEPTUAL RENDERING

KITCHEN

“From the beginning, our goal was a sanctuary where design, wellness, and living come together seamlessly. Each element was crafted to inspire beauty, comfort, and tranquility, upholding the legendary service of The Ritz-Carlton.”

Diana Ulis

CEO AND FOUNDER, ADMIRE CAPITAL

THE RESIDENCES

THE RITZ-CARLTON RESIDENCES,
FORT LAUDERDALE BEACH



Bronze Waterworks fixtures lend bath and powder rooms a sophisticated patina.



Spa-inspired baths, in a tone-on-tone palette of warm stone, create a soothing sanctuary.



POWDER ROOM



SECONDARY GUEST BATHROOM

Residences are sculpted in warm limestone, marble, and light woods—a carefully curated blend of materials and textures designed to reflect the ever-changing coastal light of Fort Lauderdale Beach.

Custom fixtures and clean graphic lines keep the space refreshed and refined, while floor-to-ceiling sliding glass doors open onto private terraces with stunning water views.

THE RESIDENCES

THE RITZ-CARLTON RESIDENCES,
FORT LAUDERDALE BEACH

A limited collection of 83 waterfront residences designed to express the refined coastal character of Fort Lauderdale Beach.

Residence Features

Two and three bedroom residences plus den

Residences range from 1,550 square feet to 3,480 square feet

Select penthouses feature 11' ceilings, alongside private rooftop terraces and plunge pools

Private elevator vestibules in most residences, and dedicated service elevators

Spacious outdoor balconies with breathtaking water views

Wide-plank white oak floors

European-style kitchens appointed with custom cabinetry, warm marble countertops, and a full-height marble backsplash

Fully integrated Sub-Zero and Wolf appliance suite

European-style solid-core doors

Primary bedroom with expansive walk-in closets

Spa-inspired baths with free-standing soaking tubs and fixtures by Waterworks

Laundry room with full-size washer and dryer

Open floor plans with views of the Intracoastal Waterway and Atlantic Ocean



PRIMARY BATHROOM



EXEMPLARY AMENITIES

A rooftop pool and bar is surrounded by private cabanas and beautifully landscaped gardens, inviting owners to connect to the rhythms of nature.

Indoors, a state-of-the-art fitness and wellness center, screening room, spa, and cutting-edge multi-sport simulator offer recreation and respite.

AMENITIES

THE RITZ-CARLTON RESIDENCES,
FORT LAUDERDALE BEACH





Hand-painted paper and wall coverings elegantly capture the timeless spirit of Fort Lauderdale Beach.

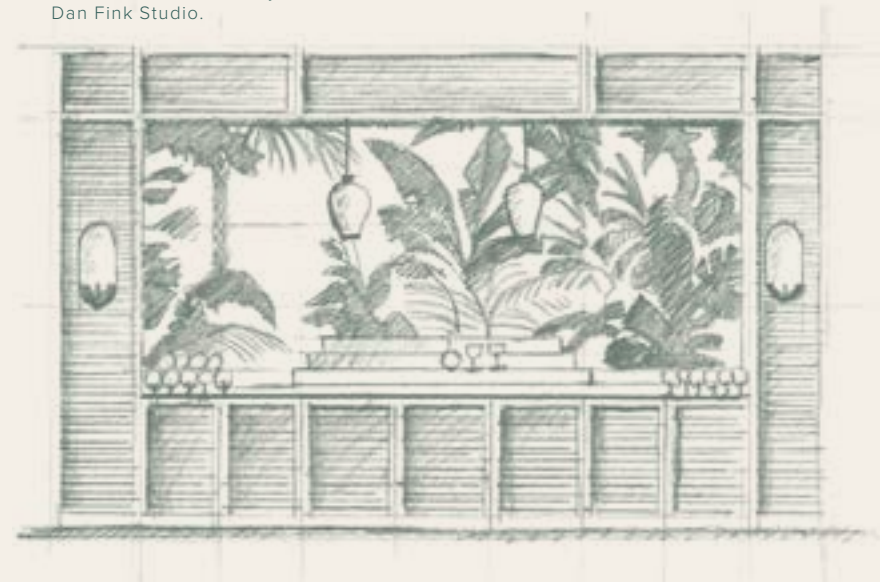
Artful mosaic tile work incorporated in the poolside bar.



Amenity Design

A tranquil palette of natural hues and tactile materials grounds the common spaces, echoing Dan Fink Studio's signature balance of modern clarity and refined simplicity. Abundant outdoor spaces—featuring leisure and lap pools surrounded by lush gardens and private cabanas—invite a seamless connection to the surrounding environment.

Concept sketch for catering kitchen and cabanas, by Dan Fink Studio.



COASTAL CURATION

Dan Fink Studio shapes inviting amenity environments through a thoughtful composition of materials, fixtures, and detailing. This refined design language pairs serene coastal influence with rich tactile character, creating spaces where custom white oak millwork and sculpted metal finishes come together with carefully considered accents in quiet sophistication.

AMENITIES

THE RITZ-CARLTON RESIDENCES,
FORT LAUDERDALE BEACH



Throughout the wellness amenity spaces, ocean blue linens and glass are contrasted by warm stones.

Moments of wonder and curiosity pop up in unique shoreside accents.

Stone and coral details connect owners to the surrounding seaside environment.



Every design decision honors the extraordinary beauty of South Florida's coastal waters.



A suite of amenities by the revered lifestyle of The Residences.

Featured Amenities

Seamless 24-hour valet service, offering effortless arrivals, departures, and day-to-day convenience

Resort-style, 75-foot lap pool designed for invigorating morning swims and energizing daily routines

Serene leisure pool designed for effortless relaxation, sun-soaked lounging, and unhurried afternoons

Poolside bar, ideal for afternoon cocktails, casual bites, and al fresco entertaining

Private cabanas offering shaded comfort and elevated poolside privacy

Owner-exclusive lounge with a fully equipped catering kitchen, ideal for hosting celebrations, private dinners, and special gatherings

A private screening room for immersive movie nights, intimate viewing parties, and elevated entertainment experiences

Next-generation sport simulator experience that brings golf, competitive play, and interactive recreation indoors in any weather

Fully attended lobby with 24-hour concierge service—delivering legendary service at any hour

Lobby lounge offering refined comfort and effortless connection upon arrival

Thoughtfully designed dog park for play, exploration, and relaxation

Open-air BBQ area for relaxed dining and casual outdoor entertaining

State-of-the-art fitness and performance center outfitted with TechnoGym equipment, thoughtfully designed wellness spaces, and a dedicated yoga studio

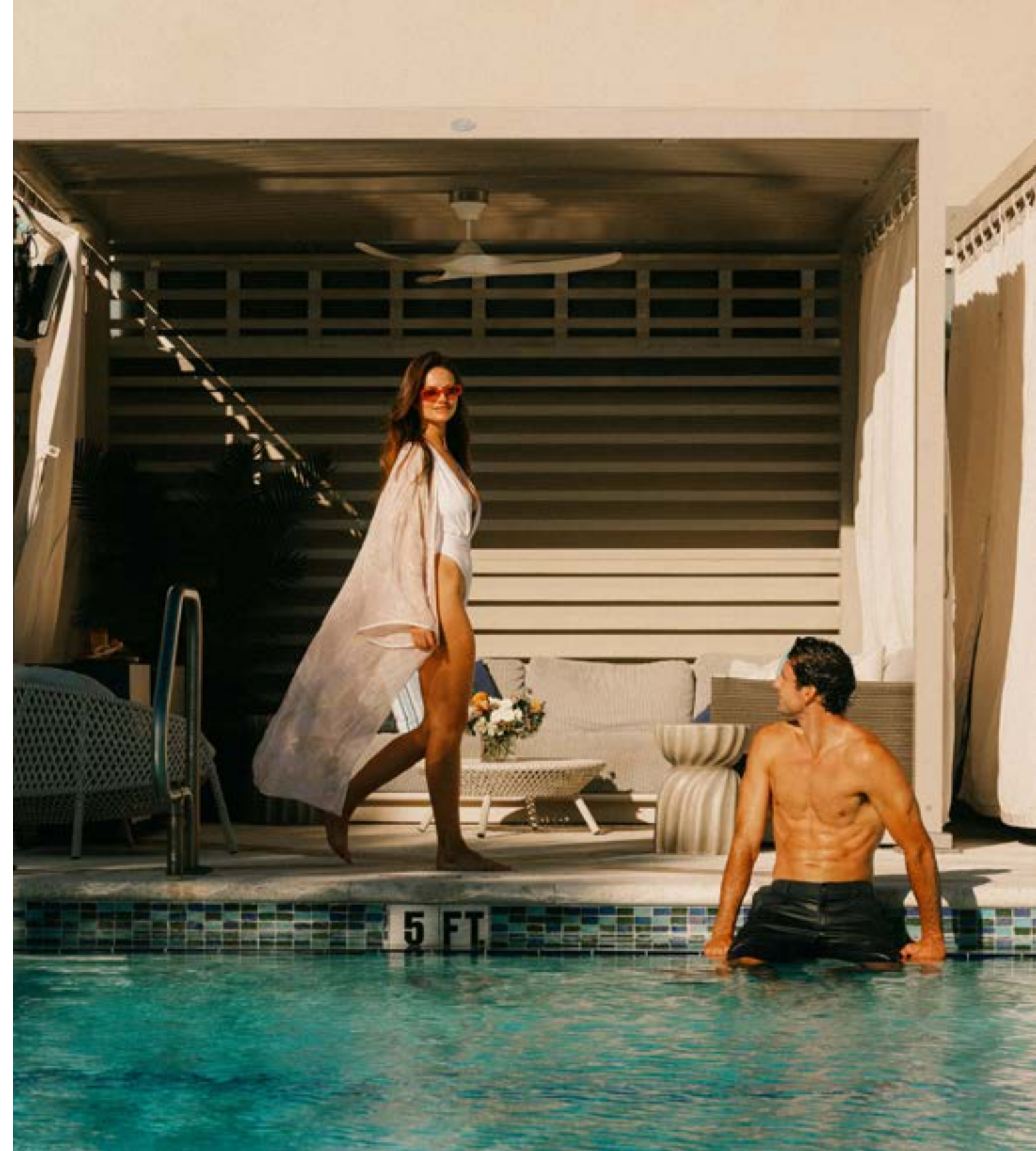
Spa featuring:

- Private Treatment Suite for Personalized Therapies
- Serene Meditation Garden
- Restorative Plunge Pool
- Revitalizing Ice Therapy Room
- Multi-Sensory Experience Shower
- Traditional Hammam Bath
- Tranquil Relaxation Lounge
- Therapeutic Steam and Sauna Chamber

Dedicated children's playroom offering an engaging space for creativity and play

A limited number of private dock slips providing effortless connection to South Florida's yachting and waterfront lifestyle

Bayside walk inviting peaceful waterfront strolls and open-air serenity





LEGENDARY SERVICE

The Ritz-Carlton Residences, Fort Lauderdale Beach aim
to offer a caliber of service renowned across the world,
perfected to become a form of art.

LEGENDARY SERVICE

THE RITZ-CARLTON RESIDENCES,
FORT LAUDERDALE BEACH



Delivering a caliber of service renowned across the globe, your dedicated residential management team is available to assist with services.*

*Additional Residential Services**

Activity arrangements

Airline/private air reservations

Airport/ground transportation arrangements

Automobile rental reservations

Butler/doorman/porter services

Business center

Common area housekeeping

Common area maintenance

Coordinate delivery services

Hotel and guest suite reservations

Limousine/car service reservations

Loss-prevention

Move-in coordination

Newspaper/magazine/package delivery

Notary public services

Ordering floral arrangements

Pet care/kennel information & reservations

Reserving golf tee times

Restaurant information/reservations

Shopping information

Spa & salon reservations

Theater & entertainment information

Tour information & reservations

Trash removal

Valet parking

*À la carte services may be arranged by the concierge team and are typically provided by third-party vendors not affiliated with The Ritz-Carlton Residences, Fort Lauderdale Beach. Additional fees may apply.



As a valued owner of a Marriott branded residence, you're invited into ONVIA—Marriott's exclusive Owner Recognition Platform. With benefits that exceed Platinum Bonvoy™ Elite Status, ONVIA is your passport to elevated travel, personalized service, and a lifestyle of distinction.

ONVIA

Ownership Privileges

Platinum Elite Status through 2029
(one owner per unit)

Residence owner-only exclusive ONVIA
Stays Status

Access to distinctive lifestyle partnerships

Preferred partnerships with The Ritz-Carlton
Residences, Barton & Gray Mariners Club,
Savoya Chauffeur Service, Eden Club Luxury Golf
Membership, and more

Discounted rates on food and beverage
experiences for residences co-located with a hotel

Wine partnerships and Marriott Bonvoy
Eat Around Town program for all residences

Exclusive access and offers on spa and
wellness programs

Annual access on Marriott Bonvoy credit cards
and premium retail partners

Exclusive in-person and online retail offers

Dedicated concierge services both on-site and
globally through a membership to The International
Society of Residential Concierge

Extraordinary experiences, ranging from sports to
concerts and more via Confirmed360, and access
to ONVIA sweepstakes

Early access to locally curated events
and activities

Art, culture, and design through the
Herein multimedia platform

Luxury Hotels

Exclusive Privileges

10% off regular room rate

Upgrade at time of check-in**

Daily breakfast for two

Special hotel amenity

Welcome amenity and note from
General Manager

Complimentary high-speed internet access

Convenient 4pm late checkout**

The following brands are available to book:
EDITION, The Ritz-Carlton, The Ritz-Carlton
Reserve, St. Regis Hotels, W Hotels,
JW Marriott, and more

*Residents must enroll in the ONVIA program to enjoy Platinum Elite Status through 2029. ONVIA program benefits will be offered to up to four (4) persons per unit if purchased by an LLC, or up to two (2) persons per unit if purchased by an individual.
**Based on availability.





THE LOCATION

Fort Lauderdale Beach

“When we set out to create an offering of this caliber in Fort Lauderdale Beach, we knew it needed to be anchored by a name that represents the highest global standard. The Ritz-Carlton Residences, Fort Lauderdale Beach bring an unmatched legacy of service, trust, and excellence, elevating ownership into an experience defined by care, privacy, and enduring value.”

Vatsal Shah

DIRECTOR, MICL

LIFESTYLE

THE RITZ-CARLTON RESIDENCES,
FORT LAUDERDALE BEACH



A LEGACY OF SOPHISTICATION MEETS MODERN COASTAL LIVING

The Ritz-Carlton Residences, Fort Lauderdale Beach are set in the heart of the city's arts, culture, and yachting scene, within minutes of MICHELIN-starred dining, pristine beaches, and the rich local experiences of the coveted Gold Coast.

THE LOCATION

THE RITZ-CARLTON RESIDENCES,
FORT LAUDERDALE BEACH

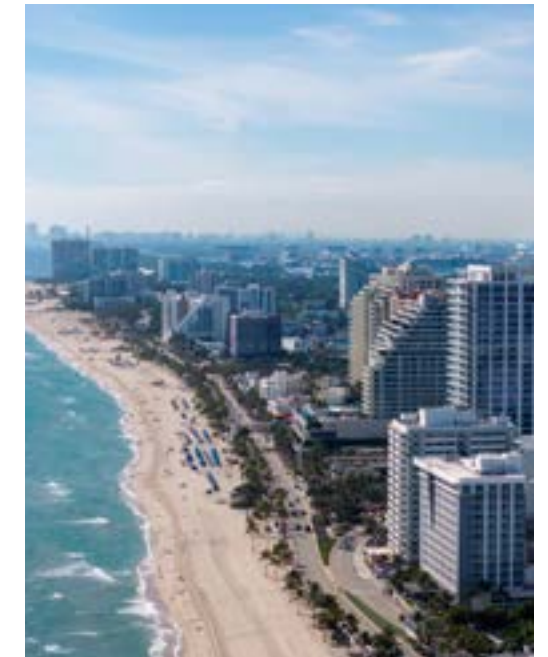


© 2025 © Lulo 20

© 2025 © Lulo 2



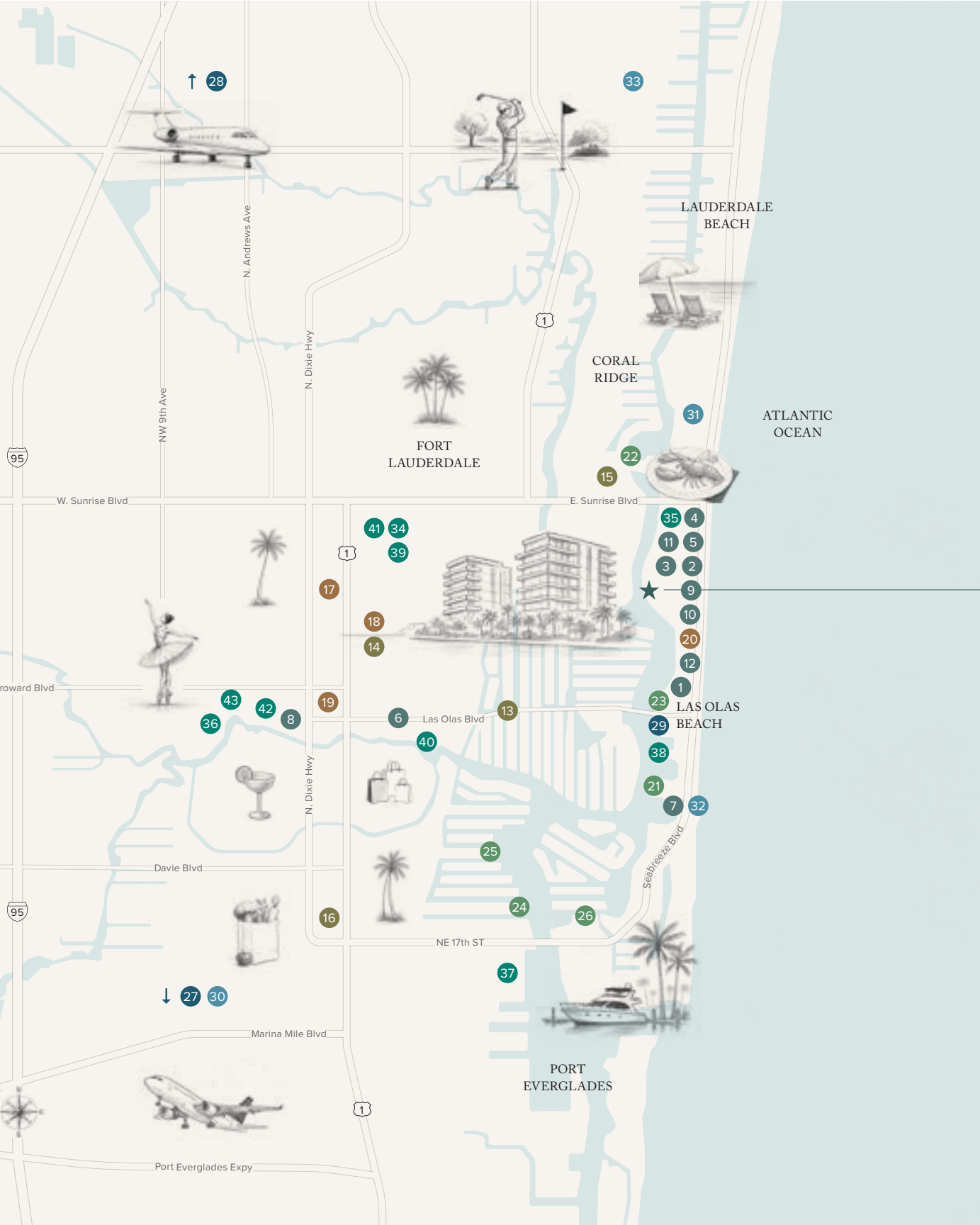
FORT LAUDERDALE BEACH



THE LOCATION

THE RITZ-CARLTON RESIDENCES,
FORT LAUDERDALE BEACH






**THE RITZ-CARLTON
RESIDENCES**
 FORT LAUDERDALE BEACH

AN UNRIVALED WATERFRONT ADDRESS

RESTAURANTS

1. Ocean Prime
2. MAASS
3. Evelyn's
4. Trulucks
5. Vitolo
6. Louie Bossi's Ristorante Bar Pizzeria
7. Marina Village
8. Eddie V's
9. S3 Restaurant
10. Steak 954
11. Takato
12. Burlock Coast

SHOPPING

13. Las Olas Boulevard
14. Fresh Market
15. Publix
16. Whole Foods Market

WELLNESS

17. Jetset Pilates
18. Reforming Pilates
19. Solidcore
20. The Ritz-Carlton Spa®, Fort Lauderdale

YACHTING

21. Bahia Mar Marina, Resort and Yachting Center
22. Coral Ridge Yacht Club
23. Las Olas Marina
24. Lauderdale Marina
25. Lauderdale Yacht Club
26. Pier Sixty-Six Marina

ACCESS

27. Fort Lauderdale-Hollywood International Airport
28. Fort Lauderdale Executive Airport
29. Water Taxi Stop

SPORTS & RECREATION

30. The Fort Pickleball
31. Hugh Taylor Birch State Park
32. Fort Lauderdale Beach Park
33. Coral Ridge Country Club

ARTS & CULTURE

34. Baptist Health Iceplex
35. Bonnet House Museum & Gardens
36. Broward Center for the Performing Arts
37. Broward County Convention Center
38. International Swimming
39. Hall of Fame
40. Jimmy Evert Tennis Center
41. Riverwalk Arts and Entertainment District
42. Parker Playhouse
43. NSU Art Museum Fort Lauderdale
44. Museum of Discovery and Science

Set directly along South Florida's most stunning shoreline, The Residences are defined by unmatched serenity and views of the turquoise Atlantic. The Residences are within minutes of acclaimed beachfront dining, world-class marinas, MICHELIN-starred restaurants, the vibrant energy of Las Olas Boulevard, and the natural tranquility of Hugh Taylor Birch State Park. Come home to a sophisticated haven of sunlight and sea—coastal living refined to its most elegant expression.



TEAM



Garcia Stromberg
ARCHITECT

Garcia Stromberg Architecture is a nationally recognized Architecture and Interior Design firm known for shaping distinctive residential, hospitality, and mixed-use environments defined by timeless elegance and contextual sensitivity. Landmark projects such as The Boca Raton and Alina Residences reflect the studio's deep commitment to ecology, culture, and sense of place. Notable clients include The Boca Raton and West Bay Club, underscoring Garcia Stromberg's leadership in luxury design and destination-driven architecture.



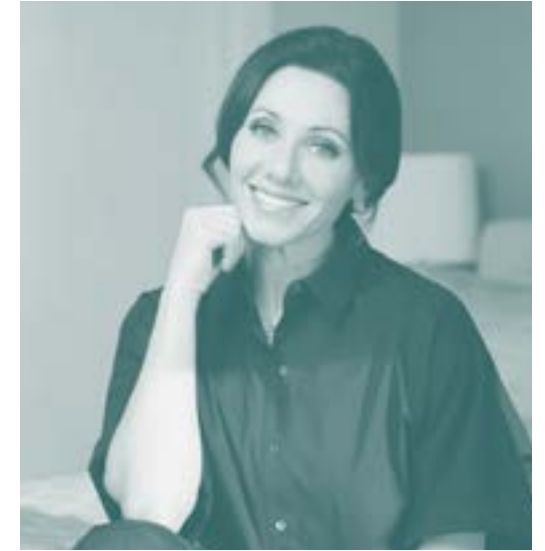
Dan Fink Studio
INTERIOR DESIGN

Dan Fink Studio is a New York–based interior design practice distinguished by its seamless blend of timeless elegance and modern warmth. Through a meticulous attention to light, texture, and materiality, the studio crafts immersive environments that feel both serene and deeply livable. Rich finishes including walnut, marble, and fluted glass express a language of tactile luxury and understated refinement. Recognized by Architectural Digest and Elle Decor, Dan Fink Studio's work encompasses exceptional private homes and sophisticated commercial destinations.



Nievera Williams
LANDSCAPE ARCHITECTURE

Blending classic elegance with contemporary sophistication, this West Palm Beach–based landscape architecture practice creates outdoor environments that feel harmonious, immersive, and enduring. Guided by a deep respect for each site's natural character, Nievera Williams Design composes landscapes through a refined balance of color, light, and texture—shaping spaces defined by serenity, grace, and quiet luxury. Its portfolio spans prestigious estates across Palm Beach, New York, and the Hamptons, serving discerning private clients and respected developers alike.



Amber Berger
WELLNESS CONSULTANT

Amber Berger is a wellness strategist and advisor helping high-achieving individuals and organizations design lives and spaces that foster sustainable well-being. Through coaching, advisory partnerships, and speaking engagements, she simplifies science-backed wellness so clients can thrive in business, relationships, and life. As host of The Well Drop podcast and newsletter, Amber blends practical tools with modern research, empowering others to embrace simplicity, consistency, and purpose in their pursuit of lasting wellness.

TEAM

THE RITZ-CARLTON RESIDENCES,
FORT LAUDERDALE BEACH



MICL
DEVELOPER

MICL holds over six decades of pioneering excellence in construction and real estate development. The group has established itself as a frontrunner in the industry by executing incredibly demanding projects such as shipping ports, townships, supertall skyscrapers, and more. It currently has a portfolio of over three million square feet under active development, including India's tallest residences: Aaradhya Avaan. Timely delivery and superior craftsmanship are core principles for MICL's leadership team, who are focused on delivering the same level of excellence for the group's projects within the United States.



Admire Capital
DEVELOPER

Miami-based Admire Capital combines leading development experience with an eye for finding value and investing in transforming South Florida's landscape. The group embraces innovation, community enrichment, and sustainable growth, appealing to investors, communities, and luxury residents alike. With a commitment to accountability and meaningful impact, the firm ensures every project delivers lasting social and economic value. Admire Capital's projects include residential and commercial developments shaping forward-thinking communities.



PMG
DEVELOPMENT MANAGER

Property Markets Group (PMG), headquartered in Miami, Florida, is a visionary real estate developer committed to elevating skylines with purposeful, iconic projects. Their developing vision balances innovation and timeless design, creating communities that enhance quality of life. Property Markets Group's dedication to responsibility and meticulous execution appeals to investors and luxury homebuyers alike, ensuring lasting value. PMG's notable projects include the Waldorf Astoria Residences Miami and Sage Intracoastal, reflecting a prestigious portfolio and an unwavering commitment to excellence.

THE TEAM

THE RITZ-CARLTON RESIDENCES,
FORT LAUDERDALE BEACH

